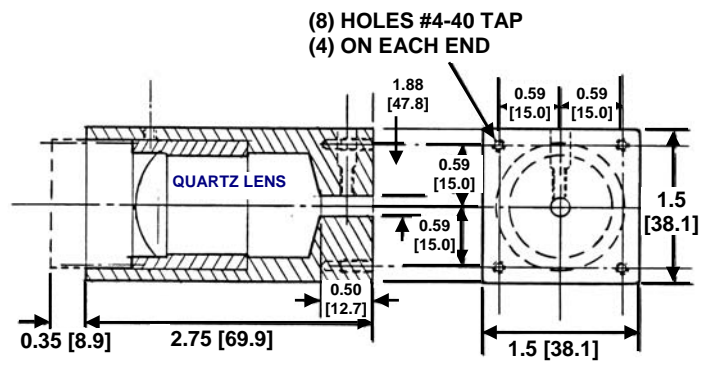


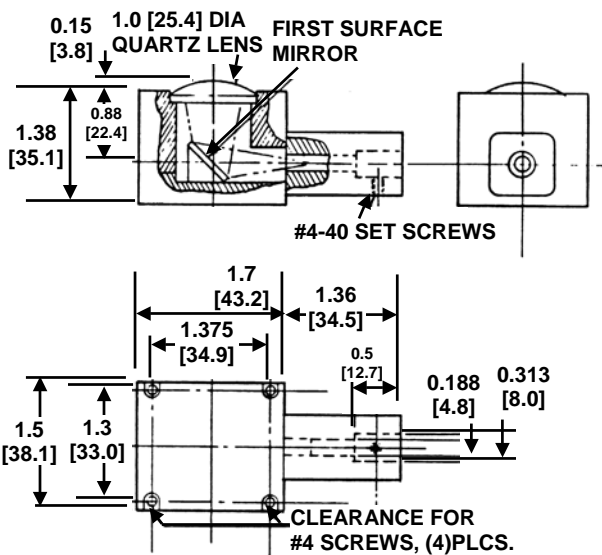
Chamber-Mounted Optical Couplers (Non-Vacuum Feedthrough Types)

Description	Model Number	Part Number
FOCUSING LIGHT COUPLER	LC10	1001859



- 0.187" (4.7mm) dia. fiber optic cable to 1" (25.4mm) quartz lens
- Focuses from 4.28" (108.7mm) to infinity
- Transmits UV, VIS, and NIR

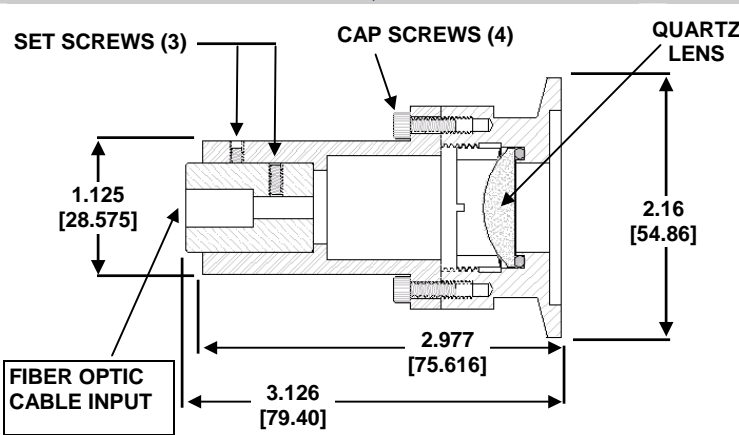
Description	Model Number	Part Number
RIGHT ANGLE LIGHT COUPLER	EP200PAC	1000447



- 0.187 in (4.7mm) dia. fiber optic cable to 1" (25.4mm) quartz lens
- Transmits UV, VIS, and IR
- Focuses on a point 135mm from the lens. At 1m from the lens, the viewing area is a circle with a diameter of 300mm.

This coupler mounts on a chamber next to a viewport and transmits UV, VIS, and NIR. It provides a means for coupling light into a fiber optics bundle in a compact configuration at a right angle to the viewing axis.

Description	Model Number	Part Number
FOCUSING LIGHT COUPLER, KF40 FLANGE	LC-KF40V	1002561



- 0.187" (4.7mm) dia. fiber optic cable to KF40 vacum flange
- 1" (25.4mm) quartz lens
- Transmits UV, VIS, NIR
- Focuses collimated and near collimated light to the fiber optic cable