

PTI-380

Portable Thermal Imager

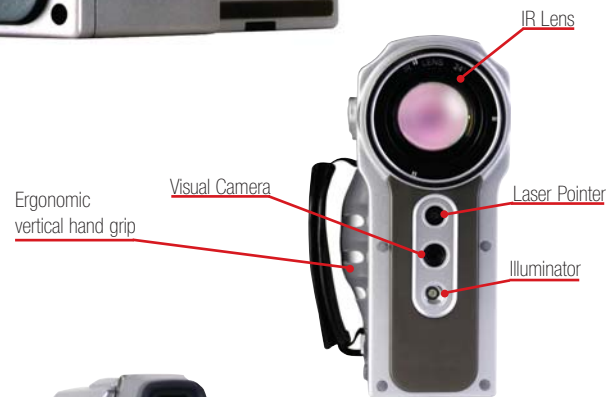
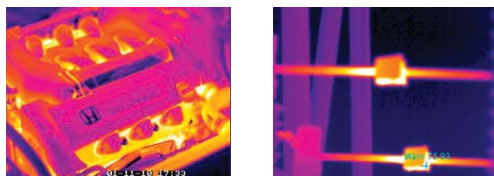
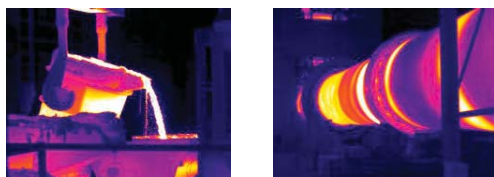
The PTI-380 is a highly precise infrared thermal imager featuring a 320x240 UFPA detector. Designed with the professional in mind, the intuitive menu system with touch screen and definable hotkey allows you to operate the camera quickly and easily. The PTI-380 provides real time imaging at 60 frames per second.

Built-in multiple measurement tools allow you to meet various needs with features like real-time thermal video transfer. A removable SD card permits up to 2GB of memory storage and Bluetooth technology enables you to record voice wirelessly.

The PTI-380 is equipped with a visual camera that records a visual image of the corresponding thermal image. With the built-in illuminator, the visual camera can shoot even in a dark environment. By using the laser pointer, you can easily associate the object on the thermal image with the physical target.

The 270° rotating 3.5" color high-resolution LCD display and viewfinder makes it easy to shoot from difficult positions.

The PTI-380 is the ideal instrument for predictive maintenance and various other process measurement applications.



- Super Compact with Rugged Aluminum Construction
- 320 x 240 Resolution
- Bluetooth Technology
- Touch Screen
- Up to 2GB Memory with removable SD card
- Dual Display
- Laser Pointer
- Uncooled Focal Plane Array Technology
- Temperature Tracking
- Powerful Analysis Tools
- Easy to Use
- Real time imaging at 60 frames per second



TECHNICAL SPECIFICATIONS FOR PTI-380

| DESCRIPTION | CHARACTERISTICS | PERFORMANCE |
|---------------------------|-----------------------------------|---|
| Image Performance Thermal | Field of view/min. focus distance | 24° x 18° / 0.26m |
| | Spatial resolution (IFOV) | 1.3mrad |
| | Thermal sensitivity | 80mK@30°C |
| | Image frequencies | 50/60Hz non-interlaced |
| | Focus | Auto or manual |
| | Digital Zoom | 1x - 8x (0.1 increment) |
| | Detector type | Focal Plane Array (FPA), uncooled microbolometer 320x240 pixels |
| | Spectral range | 8 to 14 µm |
| Image Performance Visual | Built-in digital camera | 640 x 480 pixels, full color |
| | PIP | 6 modes |
| Display | Viewfinder | Built-in, 640 x 480 color LCD (TFT) |
| | LCD display | 640 x 480 Touch Panel |
| | Status display | Yes |
| Measurement | Measurement range | -20°C to 600°C (-4°F to 1112°F) Up to 1500°C (2732°F) or 2000°C (3632°F), optional |
| | Accuracy | ±2°C, ±2% of reading |
| Measurement Mode | Spot | (up to 9 movable), manual or automatic placement |
| | Area | 5 movable area, reading of max., min. and average temperature within area |
| | Isotherm | 2 isotherm, 5 modes |
| | Line profile | Horizontal or vertical profile |
| | Emissivity correction | Variable from 0.01 to 1.00 (0.01 stepping) |
| Image Storage | Memory | Removable SD card, up to 2GB |
| Formats | Thermal image | BMP format, 14 bit measurement data included |
| | Visual image | BMP format, integrated with thermal image |
| | Voice annotation | Input via Bluetooth headset at least to 60 sec. of digital voice "clip" stored with thermal image |
| | Text annotation | Text can be inputted and stored with image |
| Laser Pointer | Classification | Class 2, red |
| Power Source | Battery | Li-ion, rechargeable, field replaceable |
| | Battery operating time | 2.5 hours continuous operation |
| | Charging system | External intelligent charger |
| Environmental | Operation temperature range | -15°C to 50°C (5°F to 122°F) |
| | Storage temperature range | -40°C to 70°C (-40°F to 122°F) |
| | Humidity | Operating and storage 10% to 95%, non-condensing |
| | Encapsulation | IP54 |
| | Shock | Operational: 25g |
| | Vibration | Operational: 2g |
| Physical Characteristic | Size | 90mm x 160mm x 184mm |
| | Weight | 1.57Kg |
| | Tripod mounting | 1/4" to 20 |
| Interfaces | USB | Image (thermal and visual), measurement data, voice and text which stored in the SD card can be transferred to PC |
| | Video output | NTSC/PAL/CCIR or RS170 EIA composite video |
| | Bluetooth | Voice recording and playback |
| | IEEE1934 | Optional. Transfer real time thermal image |
| | RS-232 | Yes |
| | External Power Supply | 8 to 12V DC input with 3 A current |

PROCESS SENSORS CORPORATION

787 Susquehanna Avenue, Franklin Lakes, NJ 07417 • Tel: 201-485-8772 • Fax: 201-485-8770 • www.processsensors.com • irtemp@processsensors.com
 Headquarters: 113 Cedar Street, Milford, MA 01757 USA • Tel: 508-473-9901 • Fax: 508-473-0715