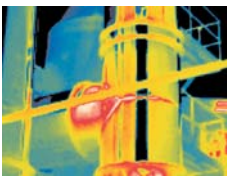
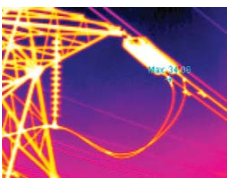


PTI-90

Powerful, High-Performance Thermal Imaging Camera

PTI-90 is a real time imaging camera, operating at 60Hz offering unbeatable capabilities. The camera is ergonomically designed for comfortable one-handed operation and provides dual keypad controls for user convenience. In hard-to-reach areas, the detachable high resolution LCD display and keypad allows the operator to observe and manipulate the image. The viewfinder is activated when the LCD display is removed. The PTI-90 includes on-board digital voice recording, a high resolution UFPA, stores thermal/visual images to a removable PCMCIA card or images can be transferred through the standard USB interface. Optionally, a variety of lens choices and temperature ranges are available.



- High resolution 320x240 UFPA
- Detachable 3.5" LCD display
- Digital voice recording
- Store up to 600 thermal images to PCMCIA card
- Lightweight
- Real time imaging at 60Hz
- Laser pointer
- Hot Spot Temperature tracking
- Powerful Analysis tools
- USB interface
- Darkness Illuminator
- Visible camera

TECHNICAL SPECIFICATIONS FOR PTI-90

ARCHITECTURE	
Infrared, CCD and laser aiming	
DETECTOR	
Type	UFPA Microbolometer
Spectral band	8 to 14 μm
Pixel resolution	320 x 240
IMAGING PERFORMANCE	
FOV	24° x 18°
Spatial resolution	1.3mrad (with standard lens)
NETD	0.08°C @ 30°C
Frame rate/Video system	60Hz (NTSC) or 50Hz (PAL)
TEMPERATURE MEASUREMENT	
Range	-20°C to 600°C (Standard) -40°C to 2000°C (Extended)
Accuracy (% of reading)	$\pm 2^\circ\text{C}$ or $\pm 2\%$
IMAGE PRESENTATION	
Video output	NTSC/PAL
Viewfinder	Built-in viewfinder and external 3.5" LCD
Others	Viewing and operating with detachable remote control
Light for CCD	Taking high resolution CCD pictures in dark areas
IMAGE STORAGE	
Image storage	600 infrared or visible images (128MB)
File format	Standard format with temperature data
Voice annotation	40 seconds voice annotation storage with each image
Comments	Add comments to the selected images
Recall	Recalling and analyzing saved images
PHYSICAL CHARACTERISTICS	
Power supply	Lithium battery \geq than 2.5 hours of operation
Weight	≤ 1.7 Kg (including battery)

ENVIRONMENTAL CHARACTERISTICS	
Encapsulation	Ip54
Vibration	2.5g
Shock	25g
Operating temperature	-15°C to 50°C
Humidity	$\leq 95\%$ non-condensing
Storage temperature	-40°C to 70°C
ANALYSIS FUNCTION	
USB Interface	USB 2.0 transfer the image and data at real time
Multi spot	Simultaneous ten of spots measurement
Profile analysis	Visualize temperature distribution on screen
Area analysis	Display max/min/avg temperature in 5 pre-defined boxes
Temp. alarm	Alert at presettable threshold temperature
Temp. capture	tracking the highest or lowest temperature spot
Isothermal	Display temperature zone in highlighted color
Temp. deviation	Calculate and display temperature deviation
Picture in picture	Display the infrared thermal and visible image on the same screen
Pseudo-color	Six color palettes can be selected
Image zooming	Continuous digital zoom (up to 8 times)
Quad-display	Activate each image for normal operation
Auto-focusing	Adjust focus automatically & intelligently for optimized image clarity
remote-control LCD	User can control the camera by operating the detachable remote-control hand-held LCD
REPORTING SOFTWARE	
With Windows™ based multi-language reporting software, a Word compatible report can be generated automatically through templates	

PROCESS SENSORS CORPORATION

787 Susquehanna Avenue, Franklin Lakes, NJ 07417 • Tel: 201-485-8772 • Fax: 201-485-8770 • www.processsensors.com • irtemp@processsensors.com
 Headquarters: 113 Cedar Street, Milford, MA 01757 USA • Tel: 508-473-9901 • Fax: 508-473-0715